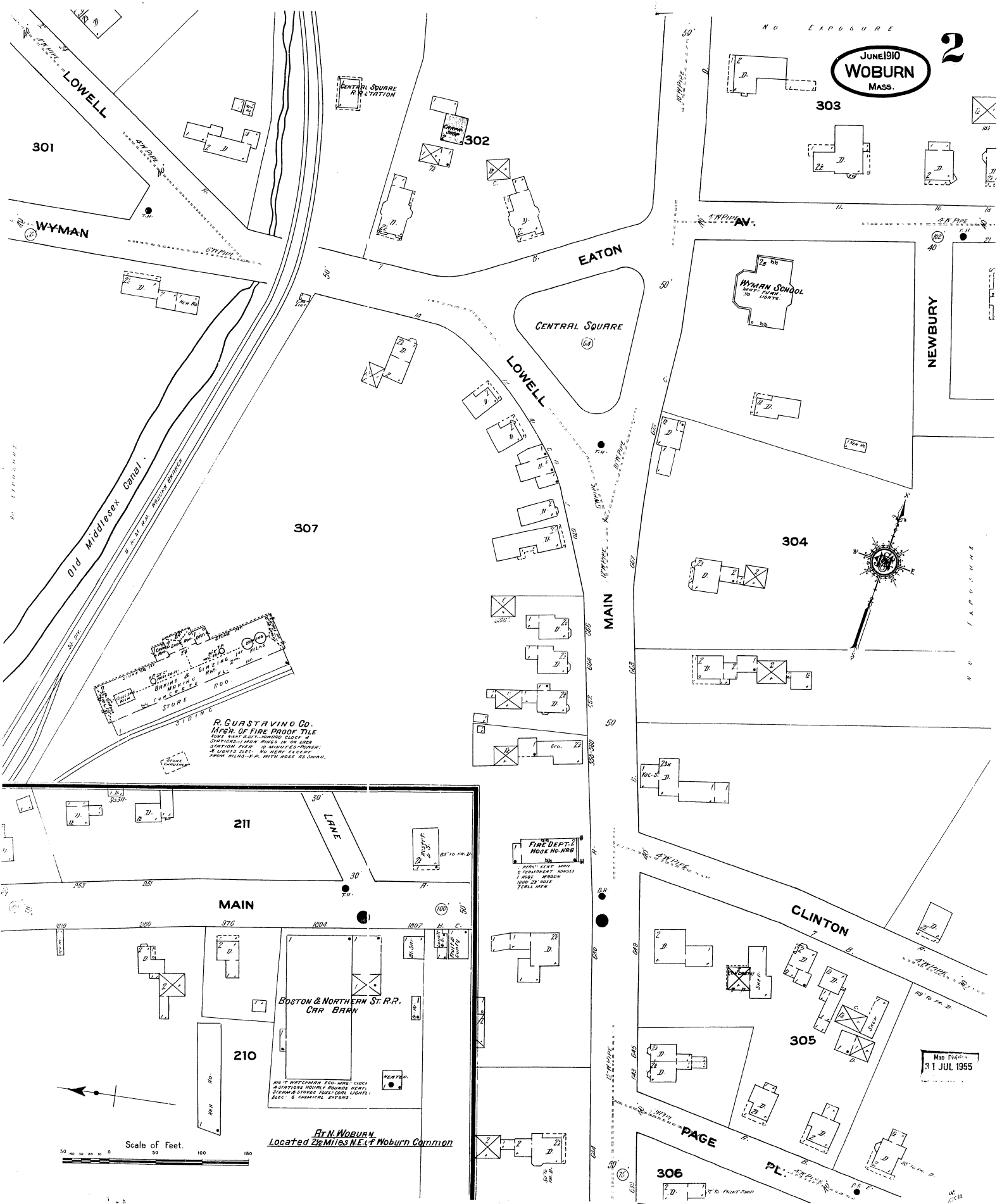


JUNE 1910
WOBURN
MASS.

2



301

WYMAN

CENTRAL SQUARE
STATION

302

EATON

CENTRAL SQUARE

303

WYMAN SCHOOL
WOMAN TRAINING
LIGHTS

NEWBURY

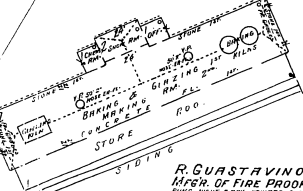
LOWELL

304

MAIN

Old Middlesex Canal
W. & M. R.R. PASSENGER STATION

307



R. GUASTAVINO CO.
ARCH. OF FIRE PROOF TILE
SOME HULL-BOTTOM-BOTTOM BLOCKS
STAIRS - MEN RINGS IN 24' CROW
SYSTEMS ELEC. 20 MINUTES' POWER
4 LIGHTS ELEC. NO WIRE EXCEPT
FROM BLDG. IN A. WIRE WIRE AS SHOWN

211

MAIN

FIRE DEPT. 2
HOSE NO. 148

PAV'T. KEEP HERE
APPOINTMENT HOUSES
ROAD WAGON
HOLD 24 HOUR
TILL HERE

210

BOSTON & NORTHERN ST. R.R.
CAR BARN

NO. 11 BOSTON ST. R.R. CAR BARN
ASSUMPTION HOUSES ROUND BENT,
STAIRS STEPS PAVERLON LIGHTS
ELEC. & CHIMNEY EXTER.

At N. Woburn,
Located 2 1/2 Miles N.E. of Woburn Common

CLINTON

305

Map Drawn
JUL 1955

PAGE

306

PL.

Scale of Feet.
0 50 100 150 200