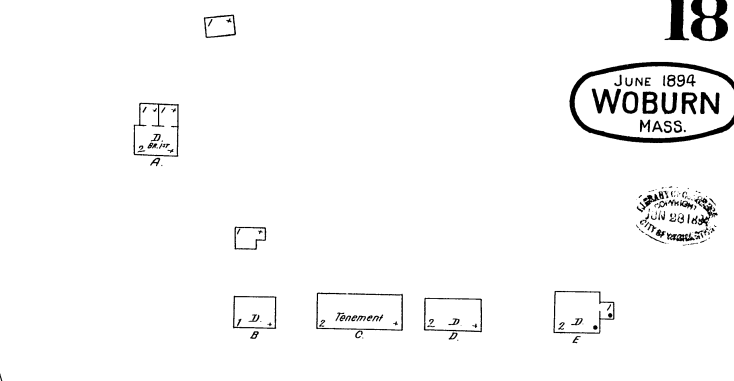
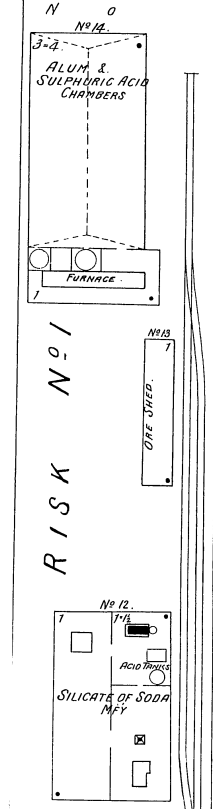
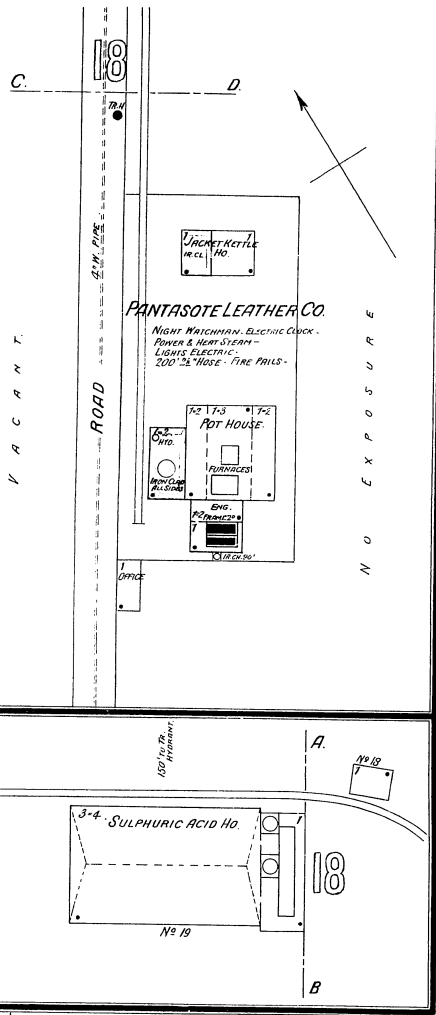


18

JUNE 1894  
WOBURN  
MASS.

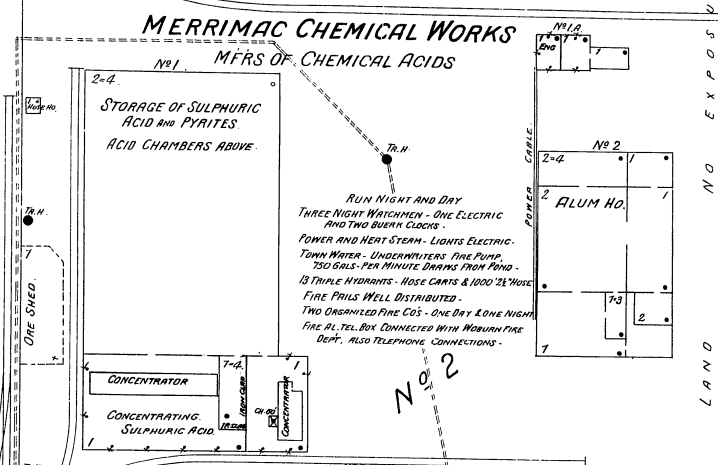


E X P O S U R E

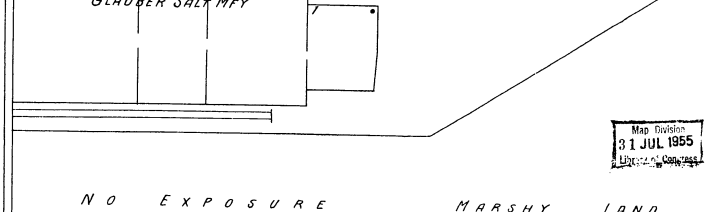
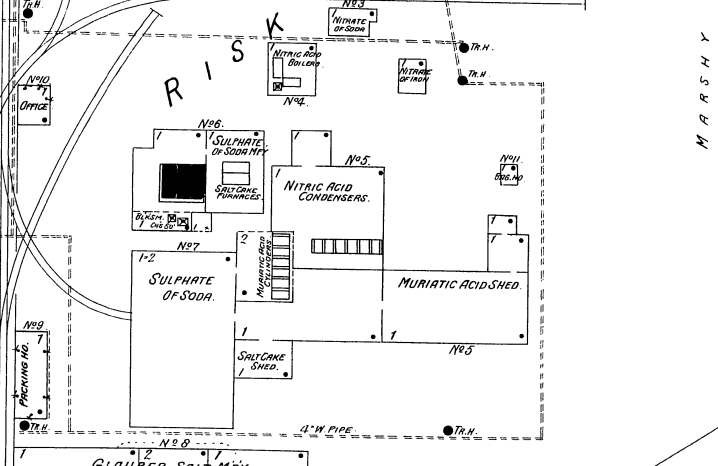
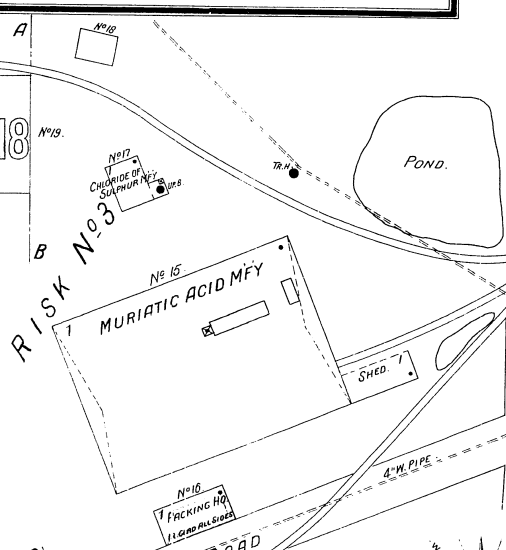


Situated 3 Miles North of  
WOBURN COMMON

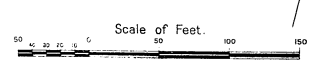
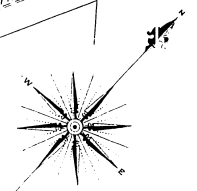
No 2, A  
REFINING BERARITE  
BENG BUILT



RUN NIGHT AND DAY  
THREE NIGHT WATCHMEN - ONE ELECTRIC  
AND TWO BURN CLOCKS.  
POWER AND HEAT STEAM - LIGHTS ELECTRIC.  
TOWN WATER - UNDERWATERS FIRE PUMP.  
250 GALS. PER MINUTE DRAWS FROM POND.  
FIRE PAIS WELL DISTRIBUTED -  
15 TRIPLE HYDRANTS - HOSE CARTS & 1000 2 1/2" HOSE  
TWO DISMOUNTED FIRE CO'S - ONE DRY ALONE NIGHT  
FIRE AL. TEL. BOX CONNECTED WITH WOBURN FIRE  
DEPT. ALSO TELEPHONE CONNECTIONS.



NO EXPOSURE MARSHY LAND



Map Division  
31 JUL 1955