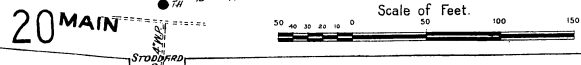


JUNE 1910
WOBURN
MASS.

NIGHT WATCHMEN, LED HANDS CLOCK;
 12 BATTERIES AND ONLY RECHARGE; WEST & POWER
 STEAM FUEL CYLINDER SUPPLY TANK LIGHTS GAS &
 ELEC. GRINDING ALL AUTOMATIC SPRINGERS
 THROUGHOUT AS SHOWN, SPACED 8" IN"
 OPEN HEADS ON ROOF AS SHOWN DRY SYSTEM
 STUFFING & DRYING ABOVE
 OPEN HEADS ON RIDGE
 WET MOUNTING FINISHING DRY
 STOVING DRYING MOUNTING
 DRYING MOUNTING

JAMES GIVEN
 WHEELWRIGHT & CARRIAGE MFG
 NO WATCHMAN; POWER GASOL. ENG.
 59
 GEO. KENNEY & CO.
 PATENT LEATHER FRY
 NIGHT WATCHMAN; NO CLOCK;
 NO LIGHTS; NO POWER; NO STEAM;
 INCLUDE TANK FUEL CYLINDER; NO FIRE
 APPARATUS; AS SHOWN



JUL 1910